

**NOT FOR  
 CONSTRUCTION**

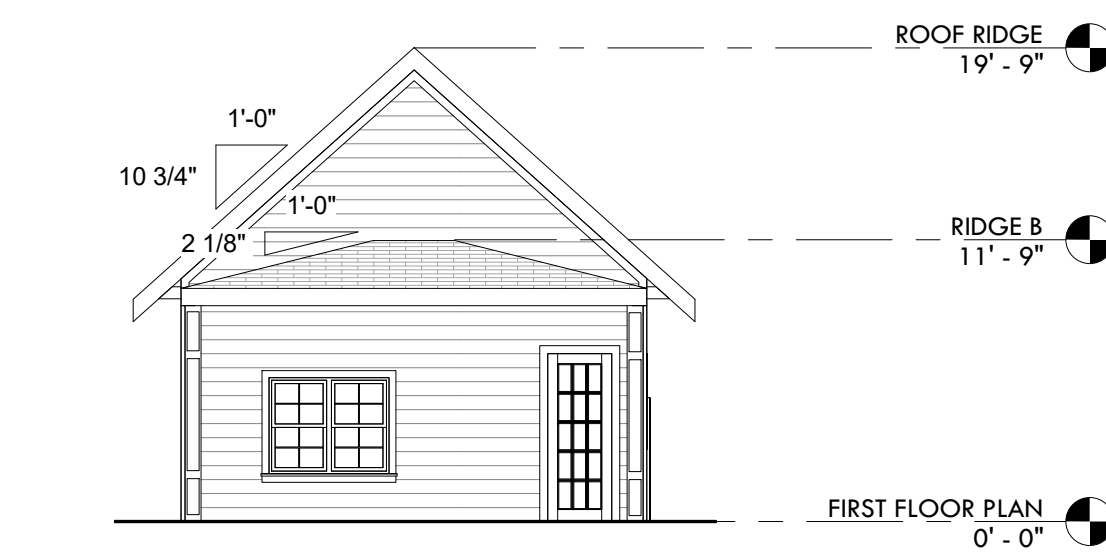
**NOTES**

1. EXTERIOR WALL STUDS ARE ASSUMED 2" X 8" (NOM.), VERIFY IF SUFFICIENT GIVEN REGIONAL ENERGY REQUIREMENTS.
2. INTERIOR WALL STUDS ARE ASSUMED 2" X 4" (NOM.).
3. WALLS ARE ASSUMED 92-5/8" PRE-CUT STUDS W/ ONE BOTTOM PLATE & TWO TOP PLATES.
4. FLOOR JOISTS ARE ASSUMED 2" X 10" (NOM.), VERIFY IF SUFFICIENT BASED ON LOCAL CODE & WOOD SPECIES/GRADE.
5. SUBFLOORS ARE ASSUMED 5/8" PLYWOOD.
6. EXTERIOR WALL SHEATHING IS ASSUMED 5/8" PLYWOOD. SIDING IS NOT DEPICTED IN PLAN VIEW.
7. INTERIOR WALL FINISHES ARE ASSUMED 1/2" DRYWALL.
8. CEILING FINISH IS ASSUMED 5/8" DRYWALL.
9. INTERIOR FLOOR FINISHES ARE NOT DEPICTED IN THIS WORK. FLOOR FINISHES TO BE SMOOTH, STABLE, FIRM, & SLIP-RESISTANT. WHERE CARPET IS PROVIDED, CARPET PILE IS TO BE NO HIGHER THAN 1/2".
10. TRANSITIONS BETWEEN FLOOR FINISHES SHOULD BE SMOOTH & FLUSH WHEREVER POSSIBLE. WHERE NOT POSSIBLE, THE MAXIMUM VERTICAL LEVEL CHANGE IS 1/4". THE MAXIMUM BEVELED LEVEL CHANGE IS 1/2", PROVIDED THE TOP 1/4" IS BEVELED AT A MAXIMUM SLOPE OF 1:2.
11. ROOF SLOPES ARE EQUAL ON EITHER SIDE OF RIDGE UNLESS OTHERWISE NOTED.
12. COORDINATE DIMENSIONS AT CLOSETS W/ INTENDED ELEVATOR SPECIFICATIONS, WHERE APPLICABLE.
13. HARDSCAPE SLOPES INDICATED FOR REFERENCE ONLY. ACTUAL SLOPES VARY BY SITE. SIDEWALK SLOPES ARE NOT TO EXCEED 5% TO REMAIN WHEELCHAIR ACCESSIBLE WITHOUT THE NEED FOR HANDRAILS.
14. ALL DIMENSIONS SHOWN ARE MEASURED FROM FACE-OF-STUD UNLESS OTHERWISE NOTED.

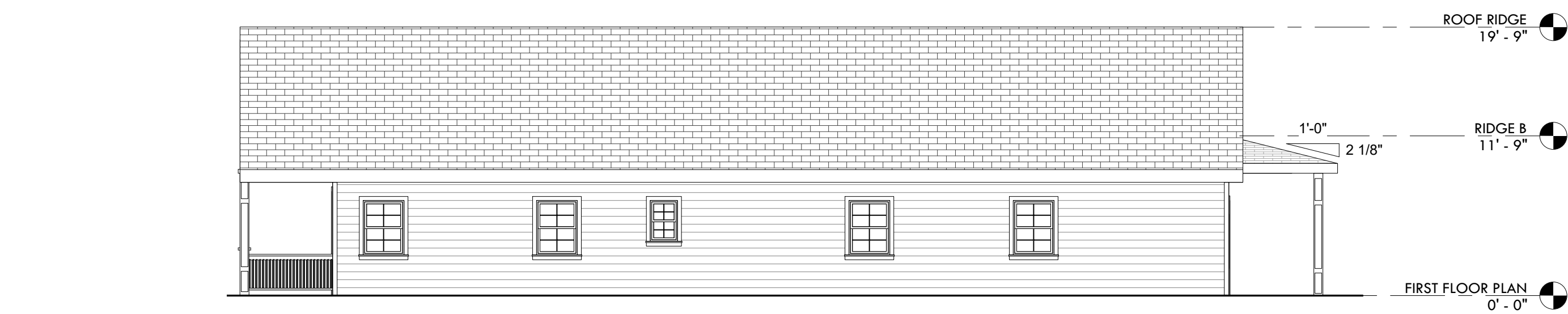
**ABBREVIATIONS**  
 CLR. - CLEAR  
 F.F. - FINISH FLOOR  
 T.O. - TOP OF

Door Number	Panel			Comments
	Width	Height	Thickness	
100	3' - 0"	7' - 8"	0" - 1 3/4"	
101	4' - 0"	7' - 0"	0" - 1 1/2"	Bifold
102	5' - 0"	7' - 0"	0" - 1 1/2"	Bifold
103	3' - 0"	7' - 0"	0" - 1 1/2"	
104	2' - 0"	7' - 0"	0" - 1 1/2"	
105	1' - 6"	7' - 0"	0" - 1 1/2"	
106	3' - 0"	7' - 0"	0" - 1 1/2"	
107	3' - 0"	7' - 0"	0" - 1 1/2"	Bifold
108	2' - 6"	7' - 0"	0" - 1 1/2"	Bifold
109	3' - 0"	7' - 0"	0" - 1 1/2"	
110	5' - 0"	7' - 0"	0" - 1 1/2"	Sliding
111	5' - 0"	7' - 0"	0" - 1 1/2"	Sliding
112	3' - 0"	7' - 0"	0" - 1 1/2"	
113	2' - 8"	7' - 0"	0" - 1 3/4"	

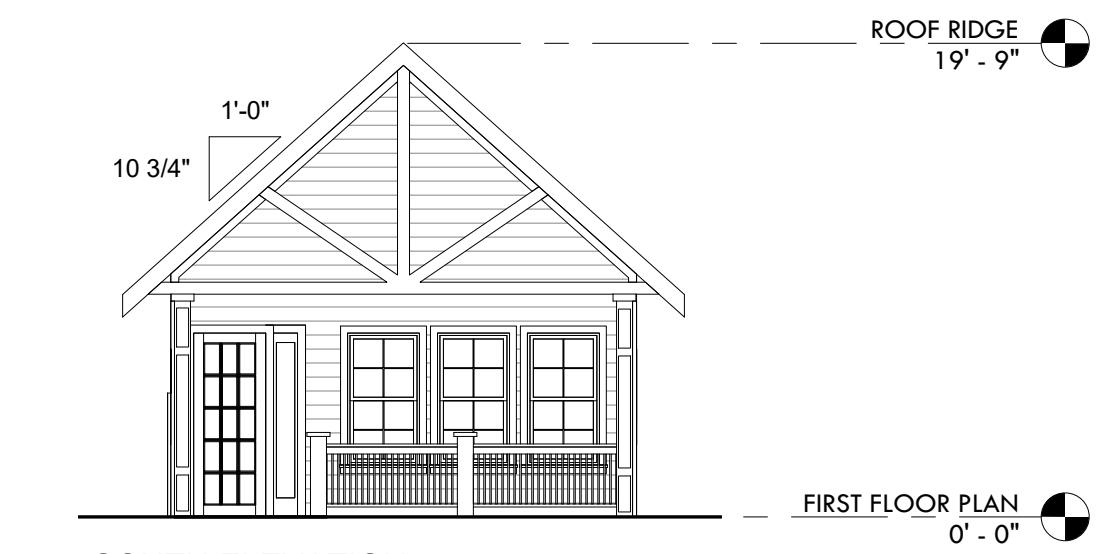
Window Type	Width	Height	
		Height	Sill Height
201	2' - 0"	3' - 0"	4' - 0"
202	5' - 0"	4' - 0"	2' - 0"
203	3' - 0"	5' - 6"	2' - 2"
204	3' - 0"	4' - 0"	3' - 0"



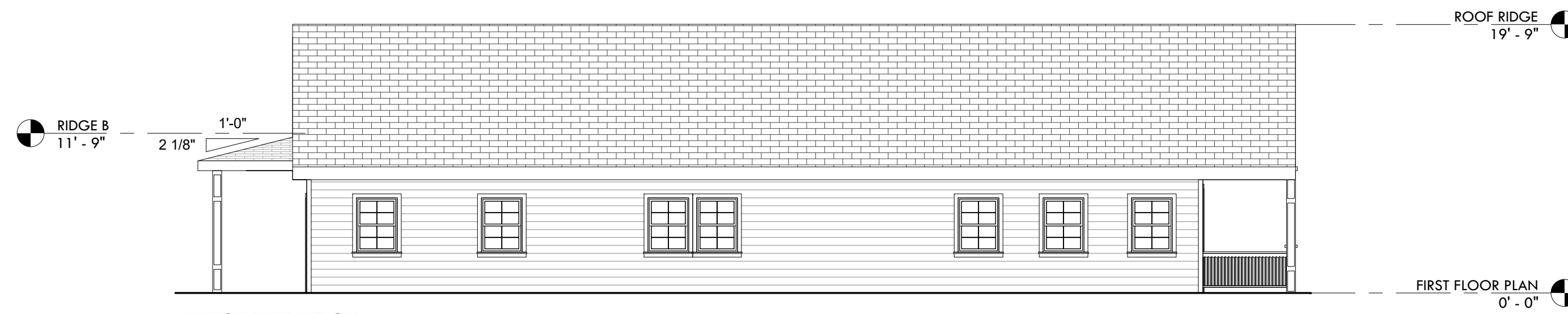
1 NORTH ELEVATION  
 1/8" = 1'-0"



2 EAST ELEVATION  
 1/8" = 1'-0"



3 SOUTH ELEVATION  
 1/8" = 1'-0"



4 WEST ELEVATION  
 1/8" = 1'-0"

**Urban Cottage 3.3**

1 STORY; 3 BED, 1 BATH HOME

DATE 2020

**Exterior Elevations**

A-301