

**NOT FOR
 CONSTRUCTION**

Door Schedule

Door Number	Panel			Comments
	Width	Height	Thickness	
100	3' - 6"	8' - 0"	0' - 1 3/4"	
101	5' - 0"	7' - 0"	0' - 1 1/2"	Bifold
102	5' - 0"	7' - 0"	0' - 1 1/2"	Bifold
103	5' - 0"	7' - 0"	0' - 1 1/2"	Paired
104	5' - 0"	7' - 0"	0' - 1 1/2"	Sliding
105	5' - 0"	7' - 0"	0' - 1 1/2"	Sliding
106	2' - 8"	7' - 0"	0' - 1 1/2"	
107	6' - 6"	7' - 0"	0' - 1 3/4"	Sliding
108	3' - 0"	7' - 0"	0' - 1 1/2"	
109	2' - 8"	7' - 0"	0' - 1 3/4"	
110	2' - 10"	7' - 0"	0' - 1 1/2"	
111	2' - 10"	7' - 0"	0' - 1 1/2"	
112	3' - 2"	7' - 0"	0' - 1 1/2"	
113	3' - 0"	7' - 0"	0' - 1 1/2"	
114	2' - 6"	7' - 0"	0' - 1 1/2"	
115	2' - 6"	7' - 0"	0' - 1 1/2"	
116	7' - 0"	7' - 0"	0' - 1 1/2"	Sliding
117	2' - 6"	7' - 0"	0' - 1 1/2"	
118	2' - 6"	7' - 0"	0' - 1 1/2"	
119	2' - 6"	7' - 0"	0' - 1 1/2"	
120	2' - 6"	7' - 0"	0' - 1 1/2"	
121	2' - 6"	7' - 0"	0' - 1 1/2"	
122	2' - 6"	7' - 0"	0' - 1 1/2"	
123	3' - 0"	7' - 0"	0' - 1 1/2"	
124	2' - 6"	7' - 0"	0' - 1 1/2"	
125	6' - 0"	7' - 0"	0' - 1 1/2"	Sliding

Window Schedule

Window Type	Width	Height	Sill Height
201	5' - 0"	6' - 0"	2' - 0"
202	3' - 0"	4' - 0"	4' - 0"
203	5' - 0"	4' - 0"	3' - 0"
204	3' - 0"	5' - 0"	3' - 0"
205	5' - 0"	5' - 0"	3' - 0"
206	2' - 0"	2' - 0"	6' - 0"
207	2' - 0"	6' - 0"	2' - 0"
208	6' - 4"	6' - 0"	2' - 0"
209	4' - 0"	2' - 0"	6' - 0"

NOTES

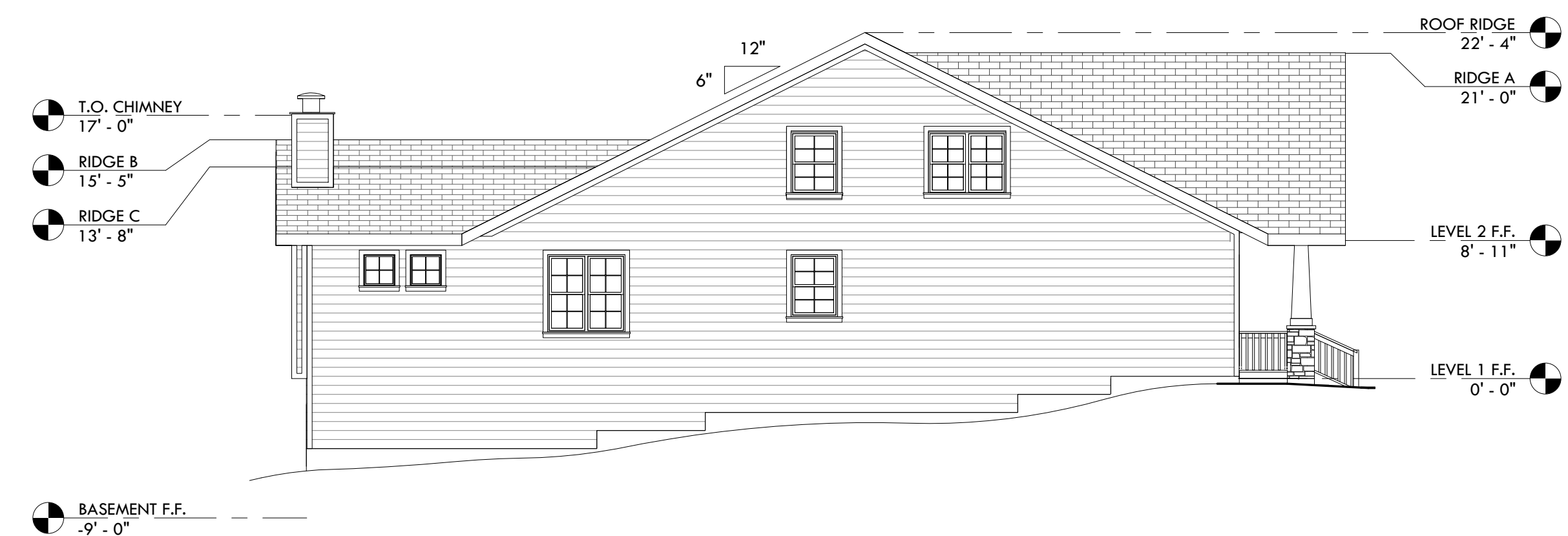
- EXTERIOR WALL STUDS ARE ASSUMED 2" X 8" (NOM.). VERIFY IF SUFFICIENT GIVEN REGIONAL ENERGY REQUIREMENTS.
- INTERIOR WALL STUDS ARE ASSUMED 2" X 4" (NOM.).
- WALLS ARE ASSUMED 92-5/8" PRE-CUT STUDS W/ ONE BOTTOM PLATE & TWO TOP PLATES.
- FLOOR JOISTS ARE ASSUMED 2" X 10" (NOM.). VERIFY IF SUFFICIENT BASED ON LOCAL CODE & WOOD SPECIES/GRADE.
- SUBFLOORS ARE ASSUMED 5/8" PLYWOOD.
- EXTERIOR WALL SHEATHING IS ASSUMED 5/8" PLYWOOD. SIDING IS NOT DEPICTED IN PLAN VIEW.
- INTERIOR WALL FINISHES ARE ASSUMED 1/2" DRYWALL.
- CEILING FINISH IS ASSUMED 5/8" DRYWALL.
- INTERIOR FLOOR FINISHES ARE NOT DEPICTED IN THIS WORK. FLOOR FINISHES TO BE SMOOTH, STABLE, FIRM, & SLIP-RESISTANT. WHERE CARPET IS PROVIDED, CARPET PILE IS TO BE NO HIGHER THAN 1/2". TRANSITIONS BETWEEN FLOOR FINISHES SHOULD BE SMOOTH & FLUSH WHEREVER POSSIBLE. WHERE NOT POSSIBLE, THE MAXIMUM VERTICAL LEVEL CHANGE IS 1/4". THE MAXIMUM BEVELED LEVEL CHANGE IS 1/2", PROVIDED THE TOP 1/4" IS BEVELED AT A MAXIMUM SLOPE OF 1:2.
- ROOF SLOPES ARE EQUAL ON EITHER SIDE OF RIDGE UNLESS OTHERWISE NOTED.
- COORDINATE DIMENSIONS AT CLOSETS W/ INTENDED ELEVATOR SPECIFICATIONS, WHERE APPLICABLE.
- HARDSCAPE SLOPES INDICATED FOR REFERENCE ONLY. ACTUAL SLOPES VARY BY SITE. SIDEWALK SLOPES ARE NOT TO EXCEED 5% TO REMAIN WHEELCHAIR ACCESSIBLE WITHOUT THE NEED FOR HANDRAILS.
- ALL DIMENSIONS SHOWN ARE MEASURED FROM FACE-OF-STUD UNLESS OTHERWISE NOTED.

ABBREVIATIONS

- CLR. - CLEAR
- F.F. - FINISH FLOOR
- T.O. - TOP OF



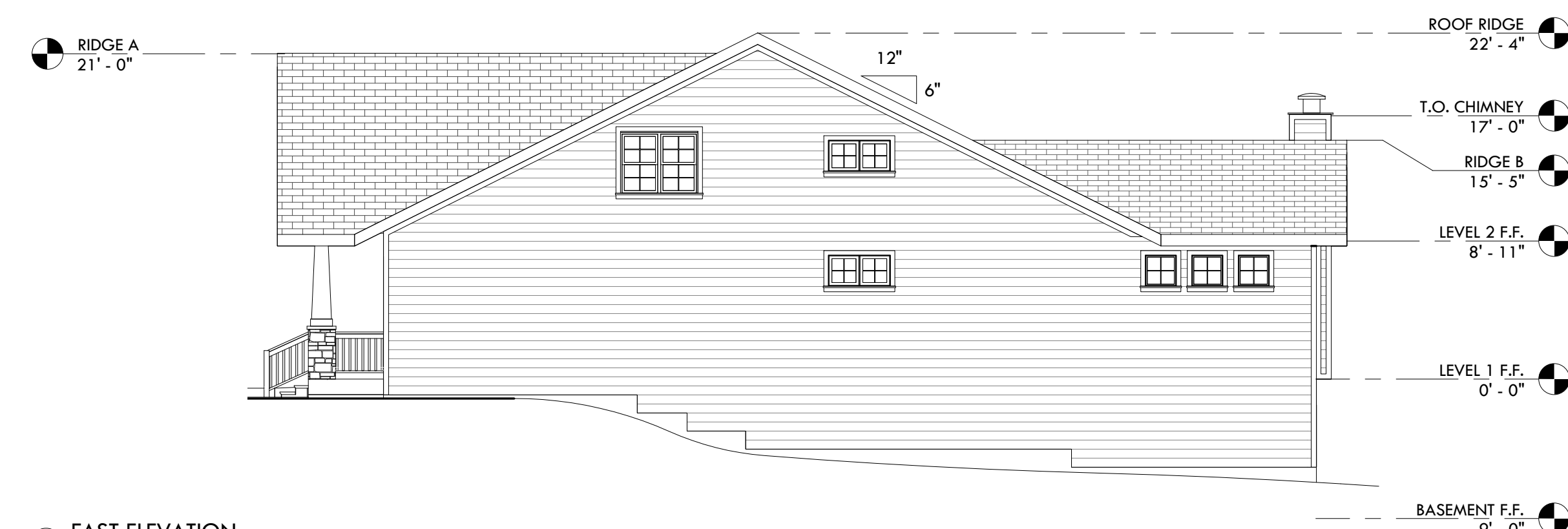
1 SOUTH ELEVATION
 1/8" = 1'-0"



2 WEST ELEVATION
 1/8" = 1'-0"



3 NORTH ELEVATION
 1/8" = 1'-0"



4 EAST ELEVATION
 1/8" = 1'-0"

LifeHouse 1.1

2 STORY, 5 BED, 3 BATH HOME

DATE 2020

Exterior Elevations